

Anniversary Quilt

Designed by Michelle Aitken

Pattern Sheet #3

Mitred Borders.

In this quilt there are Five Mitred Borders. Each Mitred border is constructed the same way. One Mitred border has appliqué stitched onto it.

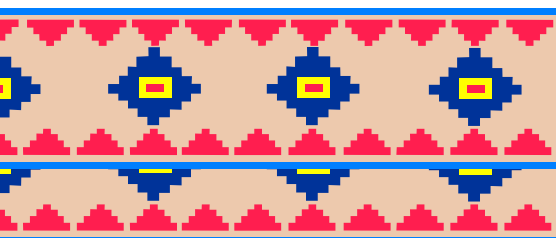
Mitred Border #1.

This border is added after the Half Square Triangle Block Border (See Pattern Sheet #2).

Cut Four 4 1/4" x 42" strips .

1. If your fabric has an all over print skip step 2 and go to step 3. If your fabric is striped, or has a symmetrical border print pattern you will need to starch your fabric and proceed to step 2.
2. Lay your fabric borders on a table top. Choose a part of the pattern that is clearly identified (this could be the edge of a stripe, the tip of a leaf etc). Pin through all the strips in the same place so that you have anchored the pattern repeat together. Repeat for all four strips. Lining up the pattern repeat means that when you cut your mitre your fabric will join up perfectly around the corner. (fig 1)
3. Place the quilt centre onto a table surface. Find and mark the centre of the quilt. Find and mark the centre of your border strips.
4. Place the four border strips across the centre of the quilt matching up the centre of the quilt and the centre of the border.
5. Slip your cutting mat under one edge of the quilt so you can measure and cut the mitre. Using your patchwork ruler place the 45° mark against the edge of the border.
6. Use your rotary cutter to cut the mitre in the borders. Ensure you keep the angles correct at each end of the border strip.
7. Pin the borders into position, easing the fabric where necessary.
8. Use 1/4" seams to sew the borders to the quilt, however you must start your seam 1/4" from the corner, and finish 1/4" from the corner.
9. Once all four borders are sewn on the quilt centre, twist the quilt so that you can sew a 1/4" seam to close each mitre.
10. Your quilt will now measure 27 1/2" x 27 1/2"

Fig 1.



Use these instructions for all Mitred borders.

